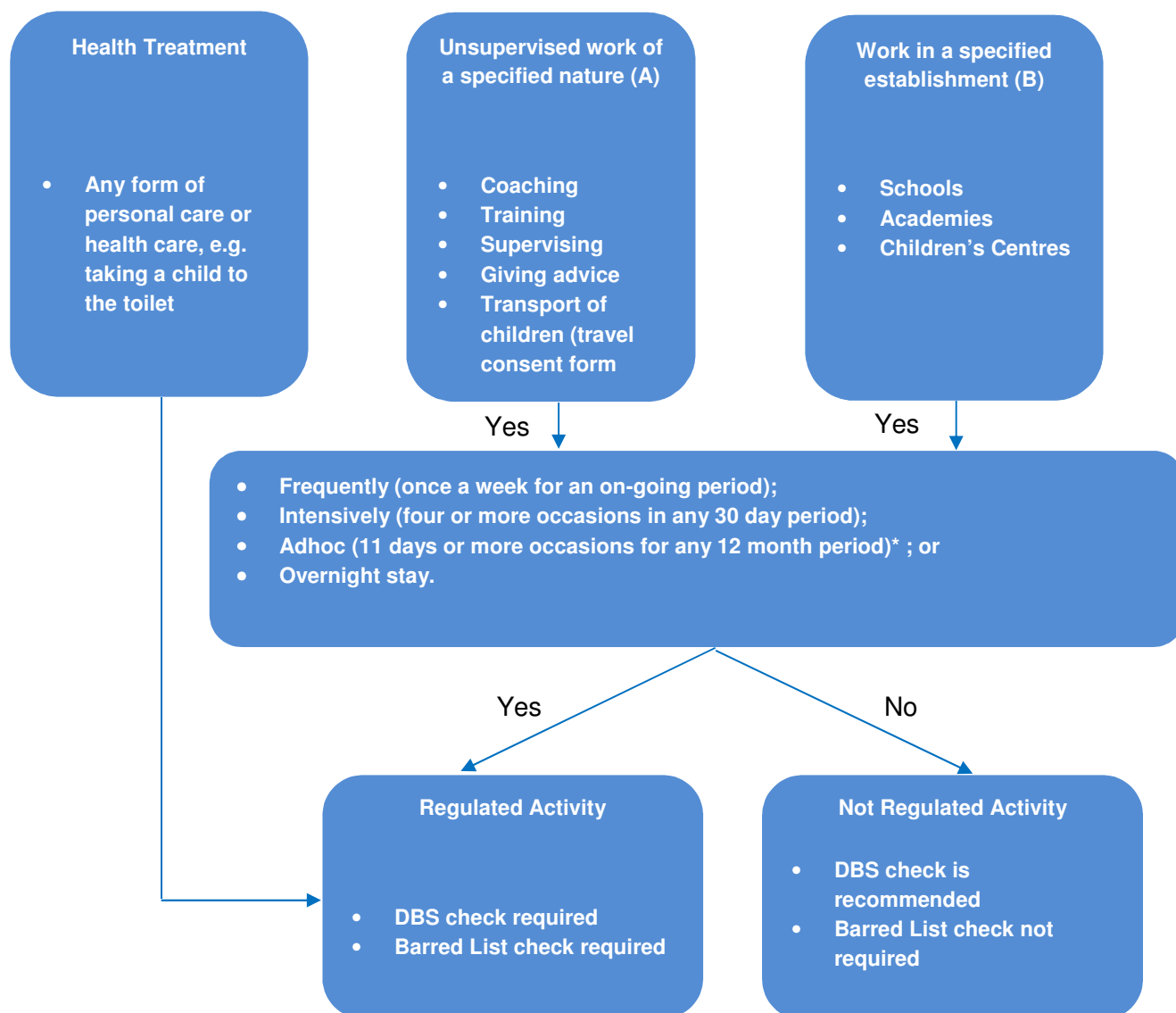


Safeguarding Information:

I am working with children; do I need a DBS check?



*In tennis we acknowledge that at times it is not always possible for a **lead person** to directly observe another person working with children and young people for the duration of sessions. If this arrangement occurs on an ad-hoc basis and the lead person reconvenes with the person being supervised and the group of children at the end of the session, then this is deemed practical and acceptable.

[Click here for the definition of Regulated Activity](#)